



FINSA

www.finsa.es



soluciones en madera Lösungen in Holz soluzioni in legno oplossingen in hout
solutions in wood soluzioni bois rozwiązania w drewnie soluções em madeira

Habitat Valencia 2011 Report



Habitat Valencia Report



Date: 20-24 September
2011

- Regularity: annual
- Nature: for professionals
- “Made in Spain” Habitat display



Ideas & Pasión
Feria Hábitat Valencia / España

Basic sectors

-
- Furniture
 - Lighting.
 - Home textiles
 - *The Sleep Show*
 - Decoration
 - Kitchen
 - Outdoor

Highlights 2011

nude

- 10th anniversary, NUDE

Exhibition : young designers present their most cutting-edge proposals in the field of habitat.

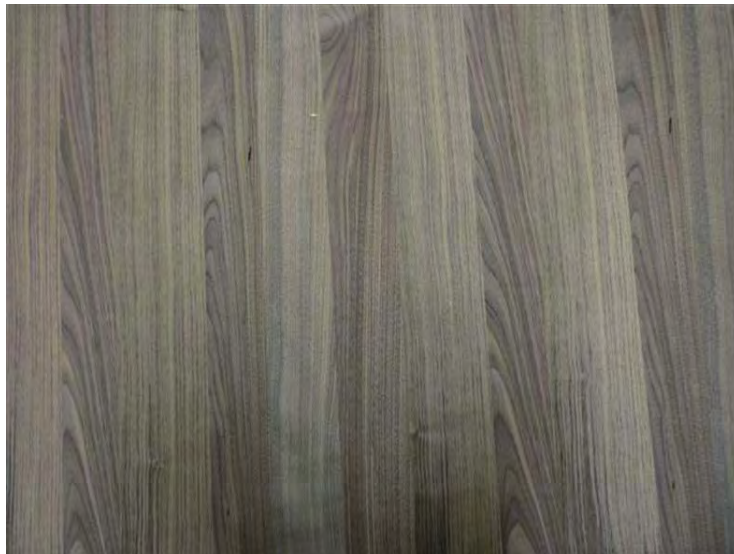
- More than 3,000 buyers from 80 countries.



Home furniture

Walnut remains the main dominating wood, with a variety of veneers and different finishings





Planked walnut



Dyed walnut veneer NG-037



03C-Nogal Canaletto



37G-Nogal Grove

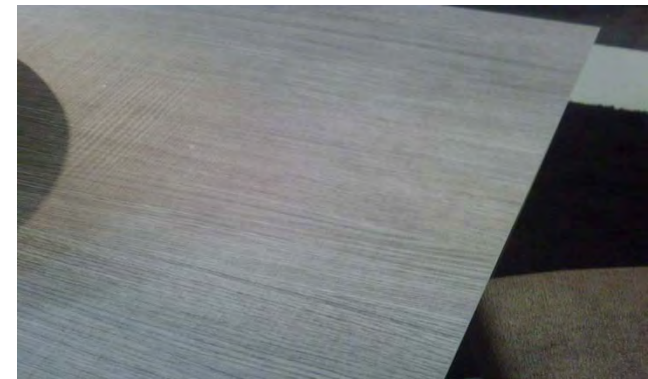


33F-Nogal Siroko

Home furniture

In modern bedrooms, classical **Oak** tones predominate, playing with veneer compositions and sawn wood textures.

Besides being present in home furniture, this type of **sawn finishing** is also present in kitchen furniture and not just in veneering. In melamine it is applied over wood designs in grey tones.





Roble Segato



Home furniture

Finsa's_Proposal
Melamine



19N-Fresno Estepa



41G-Roble Hera



Sega texture



Home furniture

Textile designs are still very much up-to-date in furniture fronts

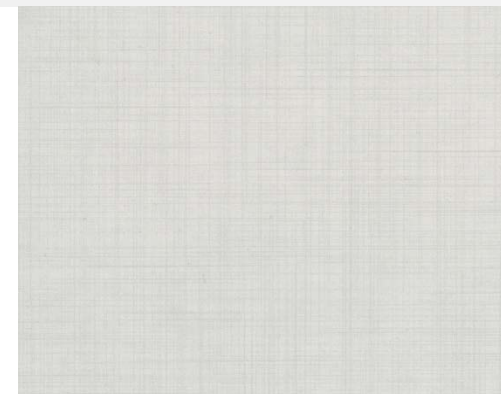
Finsa's Proposal
Melamine



13G-Lino Hanana



12G- LinoCancún



70F-Tesutto



Pine in dark tone and arenado finishing

Home furniture

Finsa's Proposal
Melamine



16G-Pino Chamonix



14G-Pino Saboya



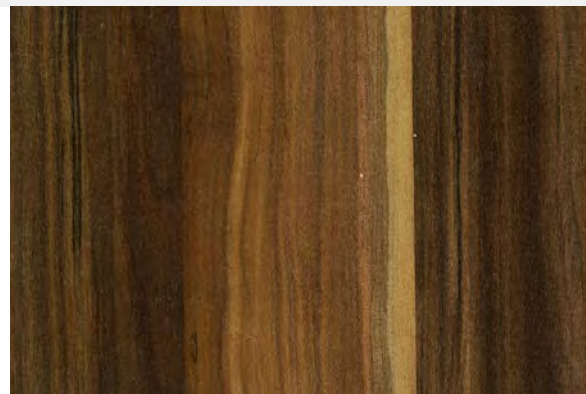
Exotic wood in cupboards

Home furniture

Finsa's Proposal
Melamine



02C-Ébano Luxury



37E-Richmond Plum



57F-Satin Olive

Home furniture

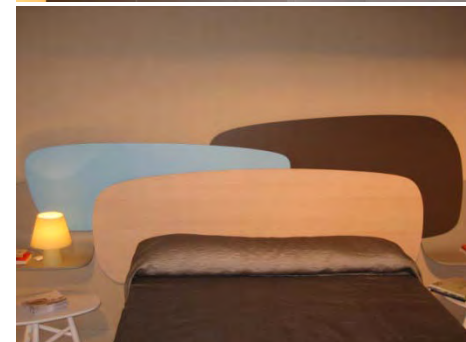
Olive wood in very light tones, applied occasionally in home and juvenile furniture

Less thickness, noticeable especially in office and juvenile furniture



Unicolours

As far as unicolours are concerned, **white** still remains a trend, while other colours in **cream, light beige** and **grey** tones are also used, with the occasional use of other more lively colours, such as red and light blue





Finsa's_Proposal
Melamine

Unicolours



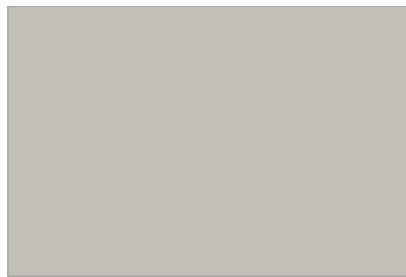
13C-Cappuccino



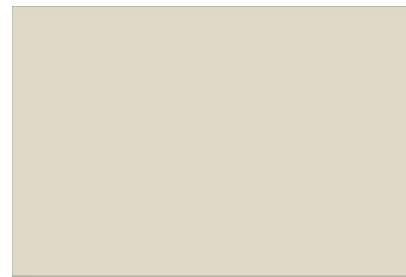
27G-Rojo Carmin



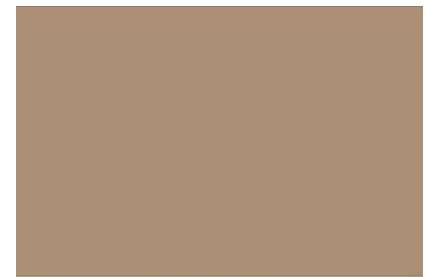
08F-Azul Claro



194-Gris Porriño



160-Beige 003



131-Arena

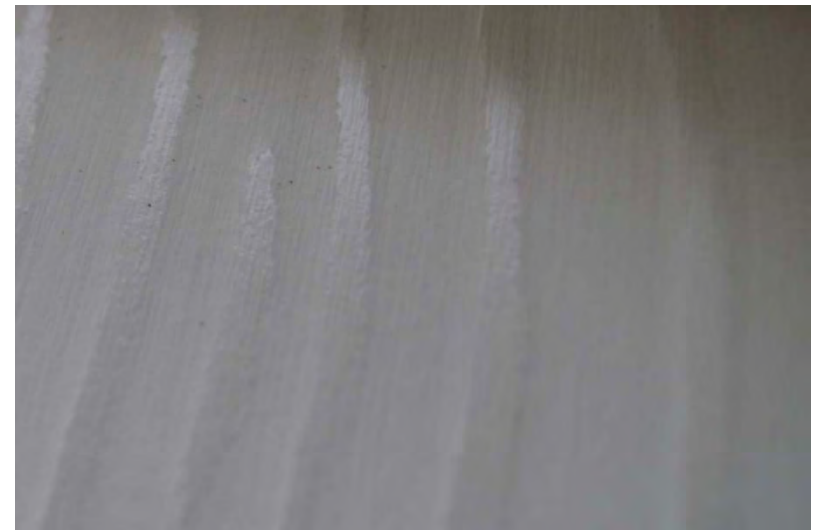


Finsa's_Proposal
Laminate

Unicolours



Vison Corallo



Blanco Corallo

Juvenile furniture

A clear emphasis on finishings similar to our **Poro Arenado**, combined with wood designs, unicolours and linear fantasies.

As far as designs are concerned, although there is no unanimity regarding the type of wood, **light and medium designs** with a linear structure are quite common, such as **Elm, Pine, Oak or Cherry**; always in linear finishing.



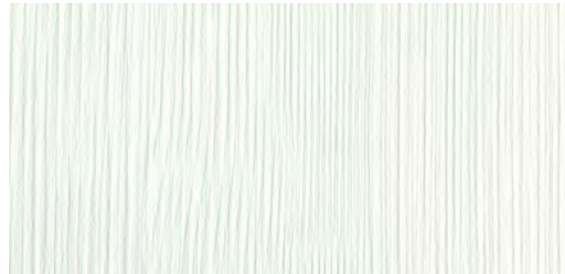
Diversity of unicolours: **Red, blue, orange, green, yellow**, while dark grey and purple colours stand out as alternatives..

**Juvenile
furniture**

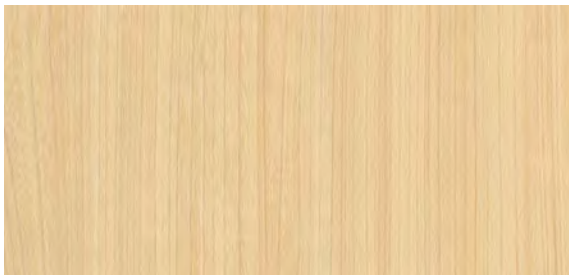
Finsa's_Proposal
Melamine



20B-Cerezo Xacobeo



17G-Pino Cervino



99B-Cerezo Araujo



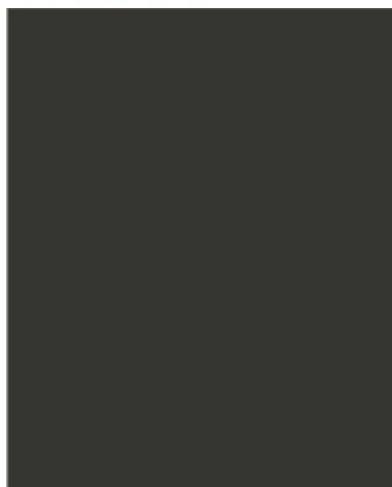
25G-Cerezo Hanami



15G-Pino Zermatt

**Juvenile
furniture**

Finsa's_Proposal
Melamine



188-Petroleo



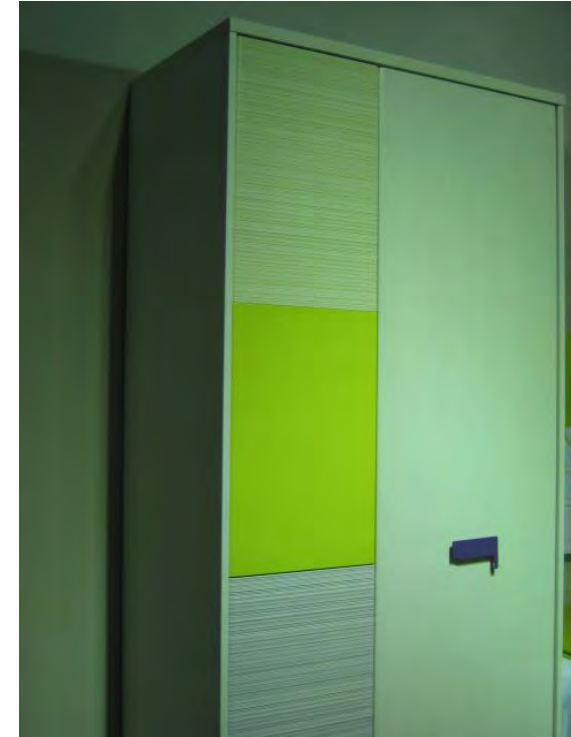
42G-Arandano



07G-Morado

Fantasies

Noteworthy is the proposal of some manufacturers for fantasies made **with lines of the same colour**, in different thicknesses and intensity, upon a white background or in the same colour as the lines, thus generating a **3D effect**.
The range of fantasies comes in different colours: **green, yellow, red, brown, violet...**

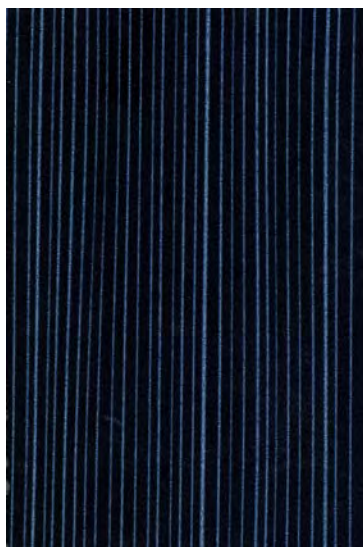


Fantasies

Finsa's_Proposal
Melamine



46D-CB Blanco



47D-CB Negro



87E-F-Viguera



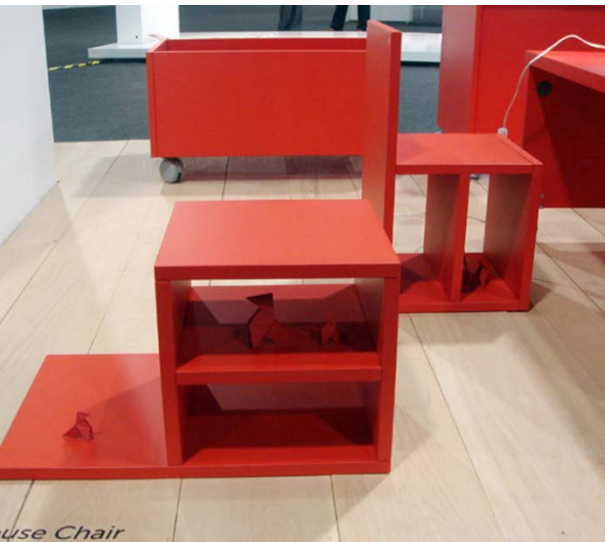
52F-F-Expresso



51F-Capriccio

Kids furniture

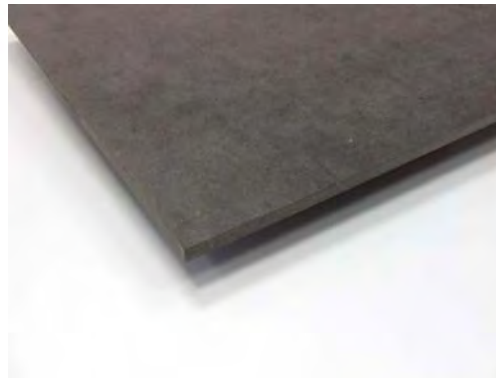
Use of **compact** boards in lively colours: **red, blue, yellow, green**



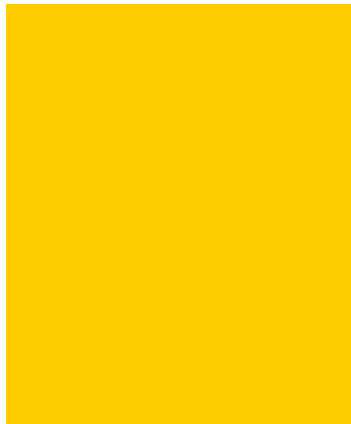


Finsa's_Proposal
Melamine

Kids
furniture



Compactmel
High-density fibre board



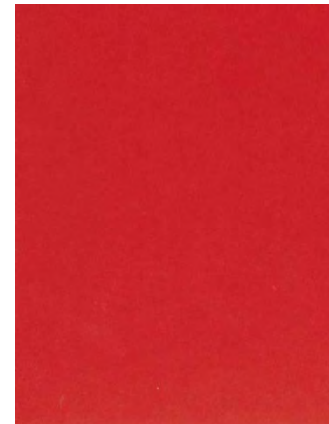
22G-Amarillo Sol



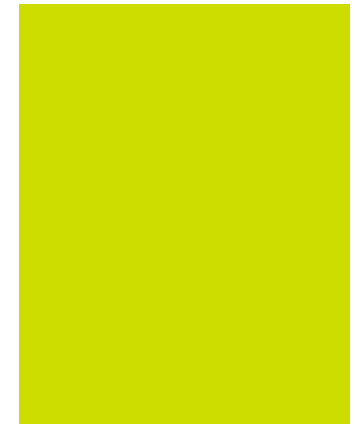
139-Azul Eo



28G-Mandarina



172-Rojo



54C-Verde Natural



Highlights

It is worth pointing out the presence of FinsaGreenpanel boards at the ADCV (Association of Designers of the Community of Valencia) booth, highlighting both its physical characteristics as well as its decorative features.



Highlights

Simultaneously with the trade fair, ADCV organized the "Valencia Disseny Week" for the third consecutive year.

This event actively promotes the culture of design within society. Besides holding different initiatives, such the ADCV awards; organizing conferences, workshops, papers, etc., they bring design closer to the general public by holding exhibitions in different places throughout the city.

The growing importance of this event not only fulfills its own goals, but also provides the city with a good environment throughout the week, with design always present.

